

EXPLORE JAPAN VIRTUAL SUMMER CAMP

Dates: Monday, July 13 – Friday, July 17

Time: 11:00am – 4:00pm (new activities each hour)

Website: www.JASGeorgia.org/event-3896499 or www.JapanFest.org/Summer-Camp

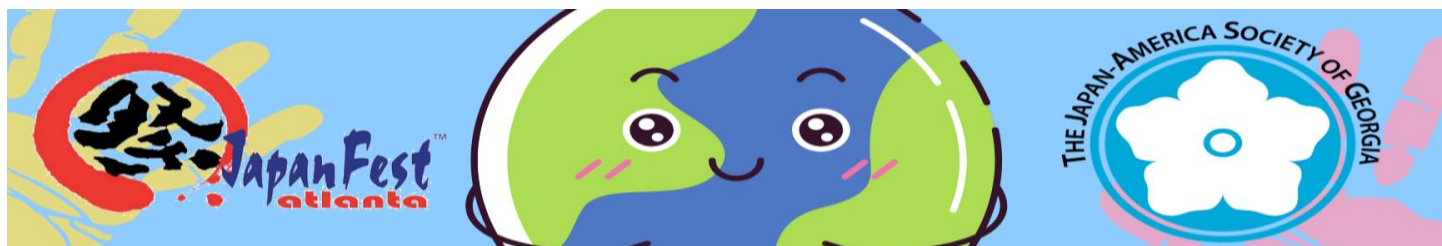
Description: Join your Japan-America Society of Georgia (JASG) and JapanFest friends for Explore Japan Virtual Summer Camp featuring daily mini Japanese language lessons, children's activities, anime watch parties, and special interactive programs on Rakugo Storytelling, Music & Art, Origami and Arts & Crafts, Japanese Cuisine & Cooking, Ways of the Samurai, Japanese Dance, and much more! Join us on all 4 days or pick and choose the times when you are available. Best part is attendees can enjoy from the safety and comfort of their own home.

Format: Explore Japan Virtual Summer Camp will start every day at 11:00am and end at 4:00pm. All Virtual Camp activities will be offered through a combination of asynchronous (pre-recorded) and synchronous (live) presentations using the following online platforms:

| | | | |
|----------------|-------------|----------------------|---|
| YouTube | Zoom | Netflix Party | Website Activities & Printouts |
|----------------|-------------|----------------------|---|

Access: All programs on the schedule are color coded New activities will be offered each hour and all programs will last 45-60 minutes with the exception of the Origami & Crafts Workshop on Wednesday, July 15 which will last 90 minutes from 2:30pm to 4:00pm.

Each activity and program will have a unique web link on the JASG/JapanFest camp webpage www.JASGeorgia.org/event-3896499 or www.JapanFest.org/summer-camp and on the PDF camp schedule that will take you directly to the correct platform for that specific program. The camp website will also list materials and items to have ready (i.e. paper and pencil for art activity and etc.) for each program if necessary. To join each program, please click on the link for that activity at the scheduled time and enjoy the fun!





Virtual Summer Camp

JULY 13 - JULY 17



MONDAY

TUESDAY

11:00 AM

Radio Taiso + Japanese Lesson

Radio Taiso + Japanese Lesson

12:00 PM

Netflix Party
Pokémon - Ep.1 &2

Netflix Party
Pokémon - Ep.3 &4

1:00 PM

Coloring Sheet

Machigae Sagashi - Find the Difference

2:00 PM

Motoko the Storyteller

Junko Fujiyama Songs

3:00 PM

Beard Papa Cream Puffs

Zoo Atlanta

WEDNESDAY

THURSDAY

FRIDAY

11:00 AM

Radio Taiso + Japanese Lesson

Radio Taiso + Japanese Lesson

Samurai Workshop + Japanese Lesson

12:00 PM

Netflix Party
Pokémon - Ep.5 &6

Netflix Party
Pokémon - Ep.7 &8

Netflix Party
Pokémon: Mewtwo Strikes Back—Evolution (1 HR 37 MIN)

1:00 PM

Word Search Puzzle

Matsuri Maze

2:00 PM

Origami Webinar

Nakato Atlanta - Making Temari Sushi and Chawan Mushi

Japanese Worksheet

3:00 PM

2:30 PM - 4:00 PM

Washoku Iku (Dorayaki)

Hanagasa Ondo Dance and Crafts

EXPLORE JAPAN VIRTUAL SUMMER CAMP



[Camp Details & Directions](https://youtu.be/lxDY1wmm97o)
<https://youtu.be/lxDY1wmm97o>



**[How to Join & Watch
Netflix Party](https://youtu.be/pCmhVPDQfF8)**
<https://youtu.be/pCmhVPDQfF8>

Click links below to access each activity & program

[Monday, July 13 - Preview](#)



<https://youtu.be/wt1FRKpQ5X0>



- [11:00am – JPN Lesson & Radio Taiso](#)
https://youtu.be/aCp16xsBU_I
- [12:00pm – Netflix Party Pokémon Ep. 1-2](#)
(Link to be sent 1 hour before screening)
- [01:00pm – Japanese Coloring Sheet](#)
www.japanfest.org/summer-camp
- [02:00pm – Motoko the Story Teller](#)
<https://us02web.zoom.us/j/85223298739?pwd=dEFxWkY5SjdiT1lqQkh2ZEtCaVRsZz09>
- [03:00pm – Beard's Papa Cream Puffs](#)
<https://youtu.be/5KQrHk6RRQk>



EXPLORE JAPAN VIRTUAL SUMMER CAMP

Tuesday, July 14 - Preview



<https://youtu.be/NtnXP01g6NI>



- [11:00am – JPN Lesson & Radio Taiso](https://youtu.be/SxqmCE6hgzi)
- <https://youtu.be/SxqmCE6hgzi>
- [12:00pm – Netflix Party Pokémon Ep. 3-4](#)
(Link to be sent 1 hour before screening)
- [01:00pm – Japanese Find the Difference](http://www.japanfest.org/summer-camp)
www.japanfest.org/summer-camp
- [02:00pm – Junko Fujiyama Music & Art](https://us02web.zoom.us/j/89819857026?pwd=N3NqU3R6M0J3RmV0L0ZUNmXnM3QyUT09)
<https://us02web.zoom.us/j/89819857026?pwd=N3NqU3R6M0J3RmV0L0ZUNmXnM3QyUT09>
- [03:00pm – Zoo Atlanta Trivia & Webinar](https://youtu.be/x3iftt3Ld50)
<https://youtu.be/x3iftt3Ld50>

Wednesday, July 15 - Preview

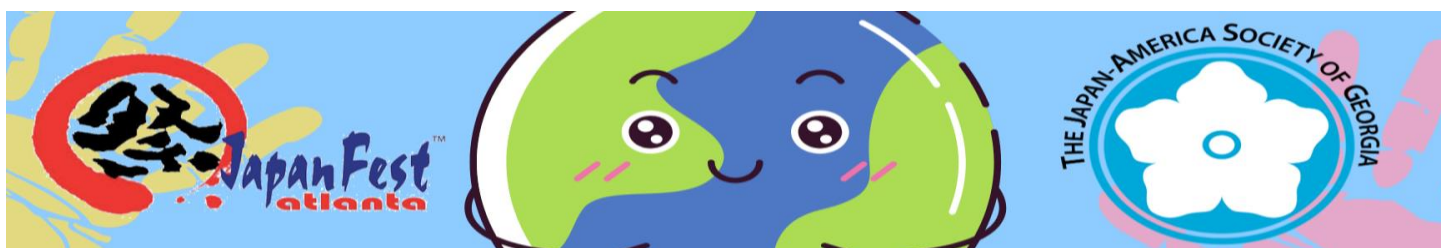


<https://youtu.be/aoipfhPL9BU>



- [11:00am – JPN Lesson & Radio Taiso](https://youtu.be/OyRn5oYAgJk)
<https://youtu.be/OyRn5oYAgJk>
- [12:00pm – Netflix Party Pokémon Ep. 5-6](#)
(Link to be sent 1 hour before screening)
- [01:00pm – Japanese Word Search Puzzle](http://www.japanfest.org/summer-camp)
www.japanfest.org/summer-camp
- [02:30pm – Origami Webinar](https://us02web.zoom.us/j/89598291428?pwd=eGFKQ2RqaEpRR0pzWHI2RmZKbSt0UT09)
<https://us02web.zoom.us/j/89598291428?pwd=eGFKQ2RqaEpRR0pzWHI2RmZKbSt0UT09>

See page 7 for materials/supplies needed for webinar workshop to try at home



EXPLORE JAPAN VIRTUAL SUMMER CAMP

Thursday, July 16 - Preview



<https://youtu.be/6l7SfUme-kY>

JAPANESE
COOKING CLASS & DEMO
Sunday, June 28, 2020 1 pm
中藤レストラン
料理教室:
てまり寿司と茶碗蒸し
6月28日(日)
REGISTRATION LINK
www.japanfest.org/event-2880308



- [11:00am – JPN Lesson & Radio Taiso](#)
<https://youtu.be/UKscYwWryak>
- [12:00pm – Netflix Party Pokémon Ep. 7-8](#)
(Link to be sent 1 hour before screening)
- [01:00pm – Matsuri Maze Worksheet](#)
www.japanfest.org/summer-camp
- [02:00pm – Nakato Cooking Demo](#)
<https://youtu.be/1WW-OpQ1Tlk>
- [03:00pm – Washoku Iku Dorayaki Demo](#)
<https://us02web.zoom.us/j/88122107896?pwd=Y2ZNN3lJaEdURml4em5icTMrdzVSUT09>

Friday, July 17 - Preview



<https://youtu.be/DHJvX7oyHLM>



- [11:00am – Samurai Webinar & JPN Lesson](#)
<https://us02web.zoom.us/j/88617384070?pwd=SEEvZkoybENUbjdpRGllqZ3BDSjhQQT09>
- [12:00pm – Netflix Party Pokémon Movie](#)
(Link to be sent 1 hour before screening)
- [02:00pm – Japanese Worksheet](#)
www.japanfest.org/summer-camp
- [03:00pm – Hanagasa Ondo Dance & Crafts](#)
<https://us02web.zoom.us/j/82459228444?pwd=bko4ZFRQcXVTWlZVc2lWMGg2ejYxZz09>

See page 7 for materials/supplies needed



EXPLORE JAPAN VIRTUAL SUMMER CAMP

The logo consists of the letters "NP" in a bold, red, sans-serif font, centered within a white rounded square.

NETFLIX PARTY

Watch Netflix in sync with friends

All of the Pokémon screenings during camp will be broadcasted via Netflix Party. Please note that Netflix Party is ONLY available for people with access to Netflix and only via Chrome internet browsers on desktop or laptop computers (and unfortunately not available on smart phones or tablets). Below are step by step directions on how it works:

Install Netflix Party

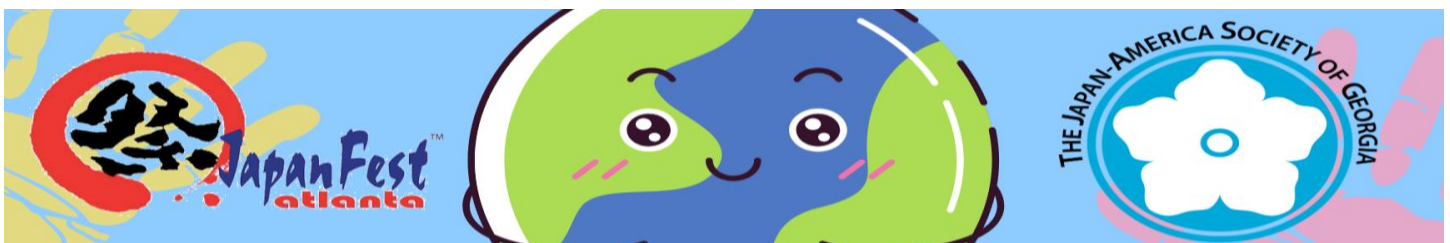
To install Netflix Party, start off by clicking the "[Install Netflix Party](#)" button on the Netflix Party website at www.netflixparty.com. Once you are redirected to the Chrome Web Store, click "Add to Chrome" to finish installing Netflix Party.

Join a Netflix Party

The JASG/JapanFest organizer will send a unique link for the Pokémon screenings 1 hour at 11:00am EDT – one before the screenings at 12:00pm. To join a party, click on the party URL link you receive from the party organizer, which will redirect you to Netflix's website. Then click on the "NP" button next to the web address bar on the upper right-hand corner if your address bar is on top of the screen, and you should automatically join the party.

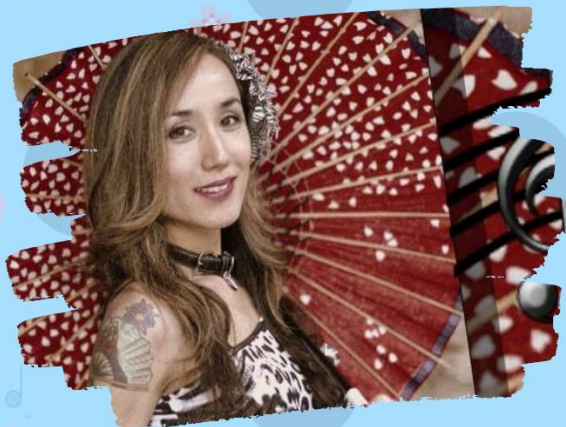
After joining the Netflix Party, you can chat with other participants on the chat screen next to the screen where the video is being played. Should you have any technical difficulties, please contact the JASG or the JapanFest office:

- Japan-America Society of Georgia: 404-842-1400 or Admin@JASGeorgia.org
- JapanFest: 404-842-0736 or Admin@JapanFest.org.



EXPLORE JAPAN VIRTUAL SUMMER CAMP

EKAKI-UTA
with Junko Fujiyama



EKAKI UTA - Draw & Sing

All you'll need is your singing voice,
a pencil, eraser, and paper to draw!



ORIGAMI WORKSHOP

What you need to come with
Let's make
A Large & Cool
Origami Mobile!
折り紙-モバイル

MATERIALS NEEDED

- 8 sheets of 8 1/2 in.X 11 in. sized paper
- 1 tree branch (approx. 15in.)
- 1 large-eye yarn needle **
- 3 yards of ribbon 1/8in. in width **
- 1 pair of scissors
- Some regular School Glue
- Crayons, markers or color pencils



Wa-Shokuiku
Learn. Cook. Eat Japanese!

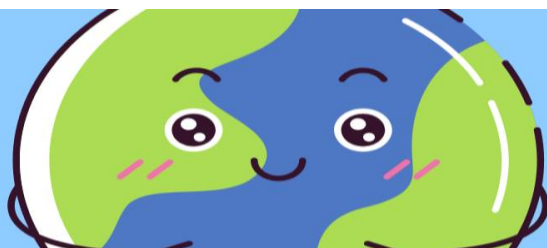


DORAYAKI

Dorayaki (Japanese Sweet Pancake) Ingredients

- ❖ 1 cup + 1 tablespoon flour
- ❖ 1 teaspoon baking powder
- ❖ 2 large eggs
- ❖ ½ cup + 2 tablespoons sugar
- ❖ 1 tablespoon honey
- ❖ (Optional) 1 teaspoon mirin
- ❖ 1 teaspoon soy sauce
- ❖ 2 ½ tablespoons water
- ❖ 1 tablespoon oil
- ❖ 1 cups Japanese sweet azuki bean paste (tsubu-an) or substitute any jam
- ❖ (Optional) 4 large strawberries, cut in half

Activity Materials: Paper and Pencil



EXPLORE JAPAN VIRTUAL SUMMER CAMP

SAMURAI WORKSHOP



DETAILS

Learn the samurai skills with Yoshi Amao from Samurai Sword Soul!

What you'll need to prepare for class:

- A working camera to show us your learned skills!
- Something you can use in place of a sword (Mop, broom, etc.)
- Enough space to swing around your sword (We don't want you to break anything!)



HANAGASA ONDO



CRAFT AND DANCE!

Materials needed:

- Paper plate
- Wrapping tissue paper sheets
> 8 to 10 pieces that are around 15 x 25 cm
- Pipe cleaners



DON'T FORGET JAPANFEST 2020 FINALE WEEKEND IS SEPTEMBER 26-27!



2020 JAPANFEST + ATLANTA WASSHOI ONE WORLD

WOW

WASSHOI ONE WORLD

JUNE 1 - SEPTEMBER 30, 2020 VIRTUAL EVENT

VIRTUAL EVENT + JUNE 1 - SEPTEMBER 30

[JapanFest Homepage](http://www.JapanFest.org)

www.JapanFest.org

[Festival Activities](http://www.JapanFest.org/festival-activities)

www.JapanFest.org/festival-activities

[Sponsor Us](http://www.JapanFest.org/sponsor-us)

www.JapanFest.org/sponsor-us

[Participate](http://www.JapanFest.org/participate)

www.JapanFest.org/participate

